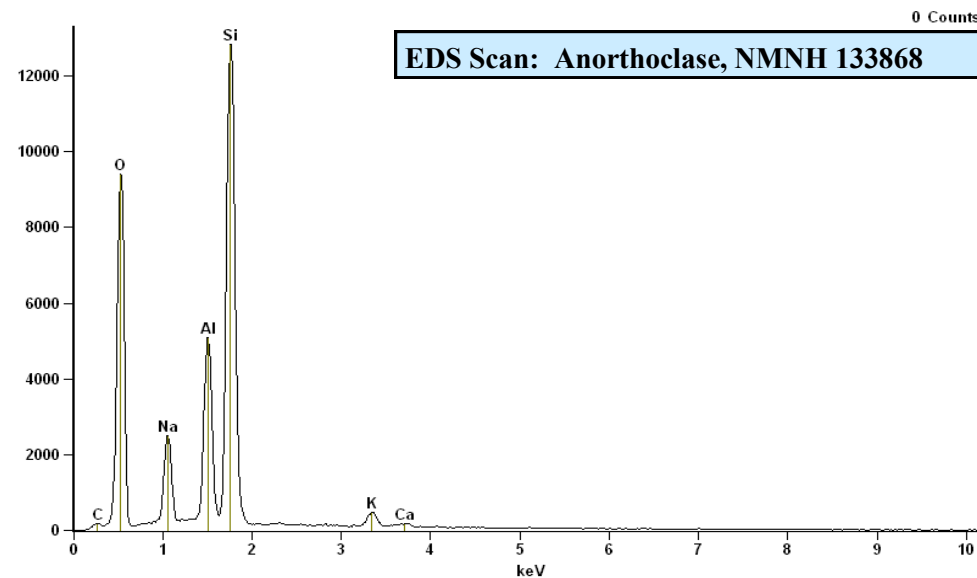
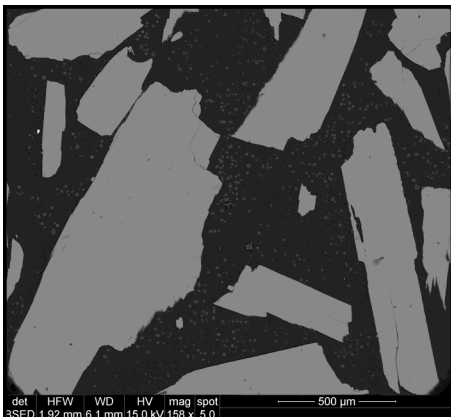




Anorthoclase, NMNH 133868

SiO ₂ :	66.44
Al ₂ O ₃ :	20.12
FeO:	0.20
CaO:	0.87
Na ₂ O:	9.31
K ₂ O:	2.35
H ₂ O:	<0.05
TOTAL	99.29



Analyst: J. Norberg (Jarosewich et. al., 1980).
Source: Kakanui, New Zealand

Size fractions available:
1.0 mm - 0.5 mm
0.5 mm - 0.25 mm

References:
Jarosewich, E., Nelen, J. A., and Norberg, J. A. (1980) Reference Samples for Electron Microprobe Analysis. *Geostandards Newsletter* 4, p. 43-47.

Standard Specifics: