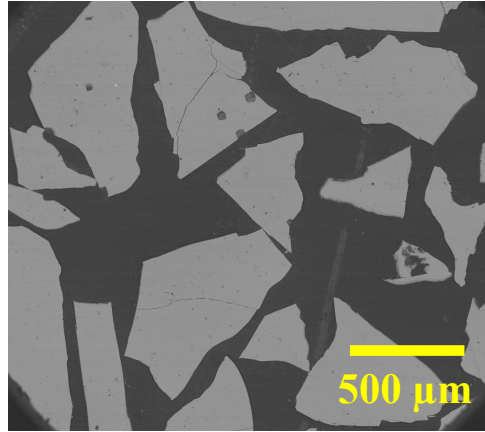




## Chromite, NMNH 117075

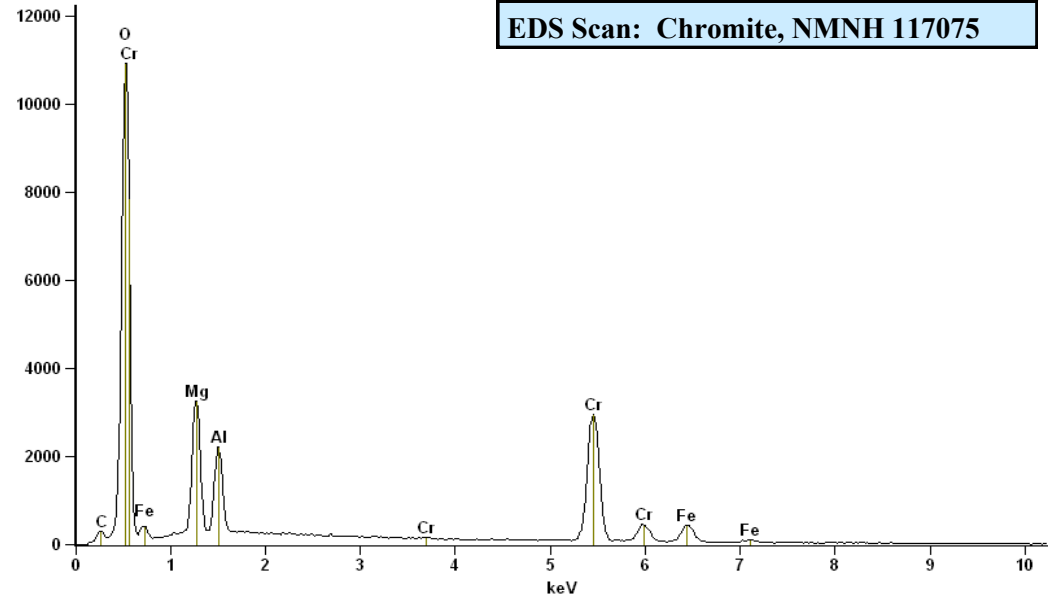
Al <sub>2</sub> O <sub>3</sub> :	9.92
FeO:	13.04
MgO:	15.20
MnO:	0.11
Cr <sub>2</sub> O <sub>3</sub> :	60.50
<b>TOTAL</b>	<b>98.77</b>



**Size fractions available:**  
1.0 mm - 0.5 mm  
0.5 mm - 0.25 mm

**Analyst:** J. Nelen (Jarosewich et. al., 1980)  
**Source:** Tiebaghi mine, New Caledonia

**Standard Specifics:**



### References:

Jarosewich, E., Nelen, J. A., and Norberg, J. A. (1980) Reference Samples for Electron Microprobe Analysis. *Geostandards Newsletter* 4, p. 43-47.