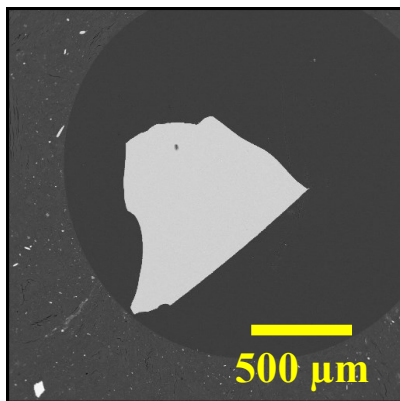


Corning Glass IR-V, NMNH 117083

B ₂ O ₃ :	4.44	CuO:	0.002
Na ₂ O:	0.018	ZnO:	0.004
MgO:	8.82	Rb ₂ O:	-
Al ₂ O ₃ :	18.46	SrO:	0.080
SiO ₂ :	57.49	Y ₂ O ₃ :	0.007
P ₂ O ₅ :	-	ZrO ₂ :	0.027
K ₂ O:	0.792	Cs ₂ O:	-
CaO:	6.41	BaO:	0.016
TiO ₂ :	0.787	La ₂ O ₃ :	0.002
V ₂ O ₃ :	0.001	Ce ₂ O ₃ :	0.760
C ₂ O ₃ :	0.747	HfO ₂ :	0.744
MnO:	0.005	PbO:	0.007
FeO:	0.744	ThO ₂ :	0.012
CoO:	0.001	UO ₂ :	-
NiO:	0.011		
TOTAL		100.39	



Size fractions available:

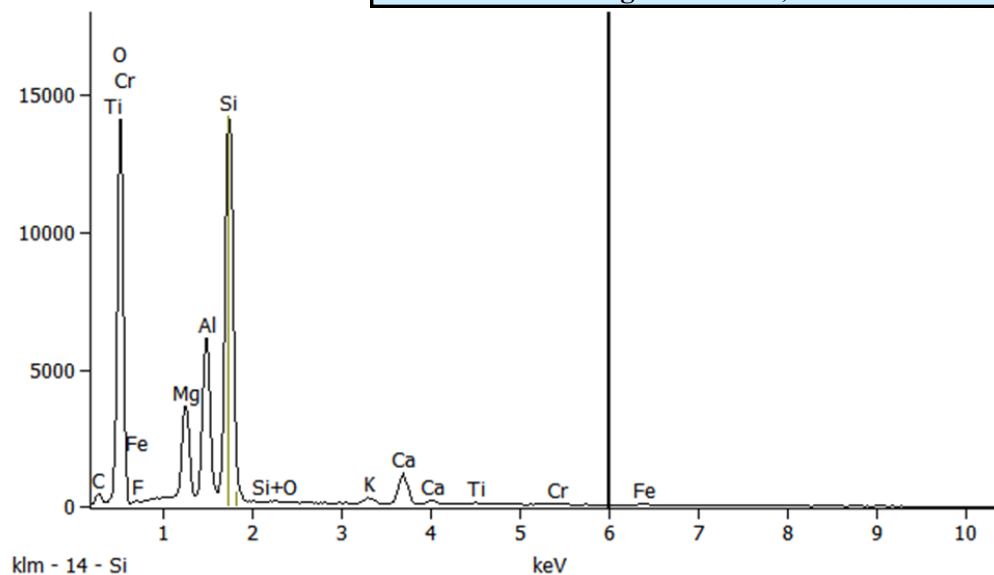
1.68 mm - 0.707 mm
 0.710 mm - 0.500 mm

Analysis: Carpenter *et. al.*, 2002
 Source: Synthetic

Standard Specifics:

A large quantity of this material exists in 6.5mm diameter rods making it suitable for large area destructive analysis.

EDS Scan: Corning Glass IR-V, NMNH 117083



References:

Carpenter, P. *et. al.* (2002) Characterization of Corning EPMA Standard Glasses 95IRV, 95IRW, and 95IRX. *J. of Res. NIST*, 107, p. 703-718.