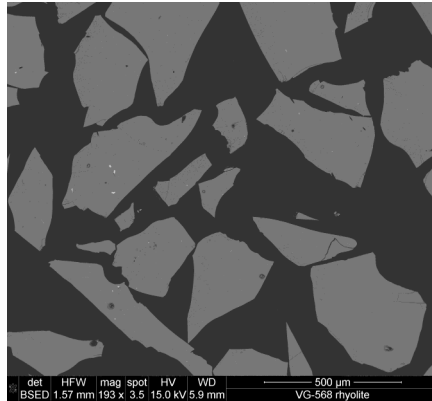




Glass, Rhyolite NMNH 72854 VG-568

SiO ₂ :	76.71
Al ₂ O ₃ :	12.06
Fe ₂ O ₃ :	0.48
FeO:	0.80
MgO:	<0.10
CaO:	0.50
Na ₂ O:	3.75
K ₂ O:	4.89
TiO ₂ :	0.12
P ₂ O ₅ :	<0.01
MnO:	0.03
H ₂ O:	0.12
Cl:	0.13
Sub-total	99.59
<hr/> O equivalent to Cl = 0.03	
TOTAL	99.56

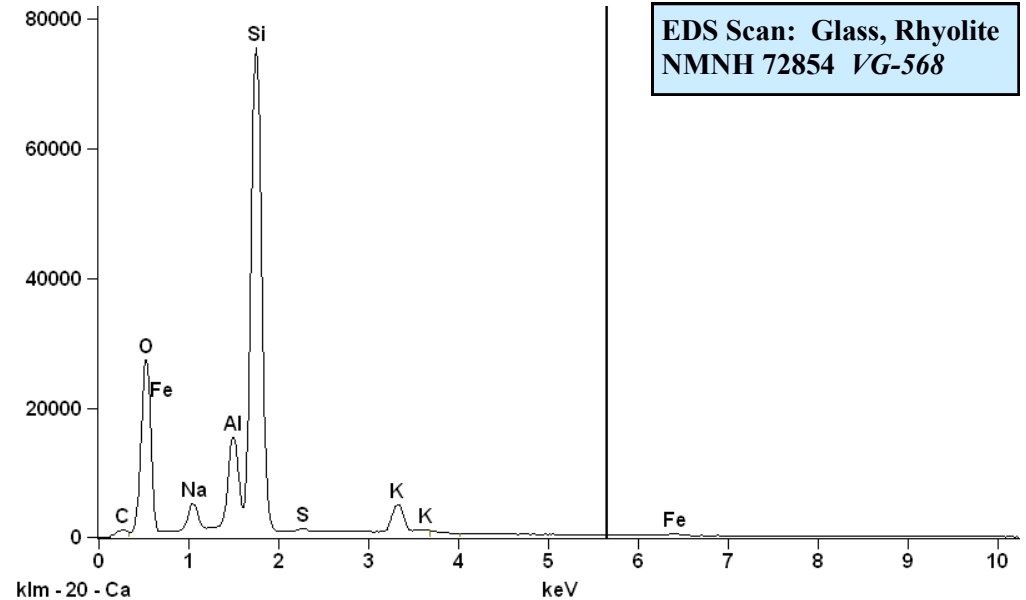


Analyst: J. Norberg (Jarosewich et. al., 1980).

Source: Yellowstone Nat'l. Park, WY

Size fractions available:

- 1.0 mm - 2.0 mm
- 0.42 mm - 0.25 mm
- 0.25 mm - 0.149 mm



References:

- Jarosewich, E., Nelen, J. A., and Norberg, J. A. (1980) Corrections. *Geo-standards Newsletter* 4, p. 257-258.
- Jarosewich, E., Nelen, J. A., and Norberg, J. A. (1980) Reference Samples for Electron Microprobe Analysis. *Geo-standards Newsletter* 4, p. 43-47.

Standard Specifics:

Impurities: Fe oxide: 5 micron crystals; common