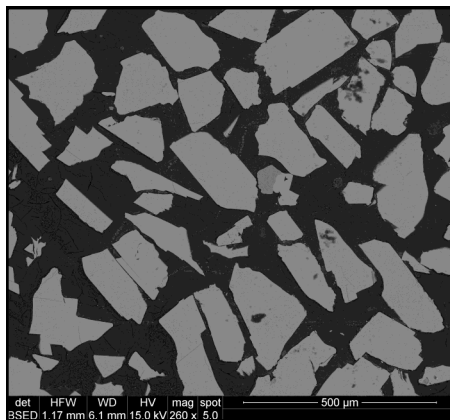


## Microcline, NMNH 143966

SiO <sub>2</sub> :	64.24
Al <sub>2</sub> O <sub>3</sub> :	18.30
Fe <sub>2</sub> O <sub>3</sub> :	0.00
FeO:	0.04
MgO:	0.03
CaO:	0.02
Na <sub>2</sub> O:	1.30
K <sub>2</sub> O:	15.14
TiO <sub>2</sub> :	0.01
MnO:	0.04
<b>TOTAL</b>	<b>99.12</b>



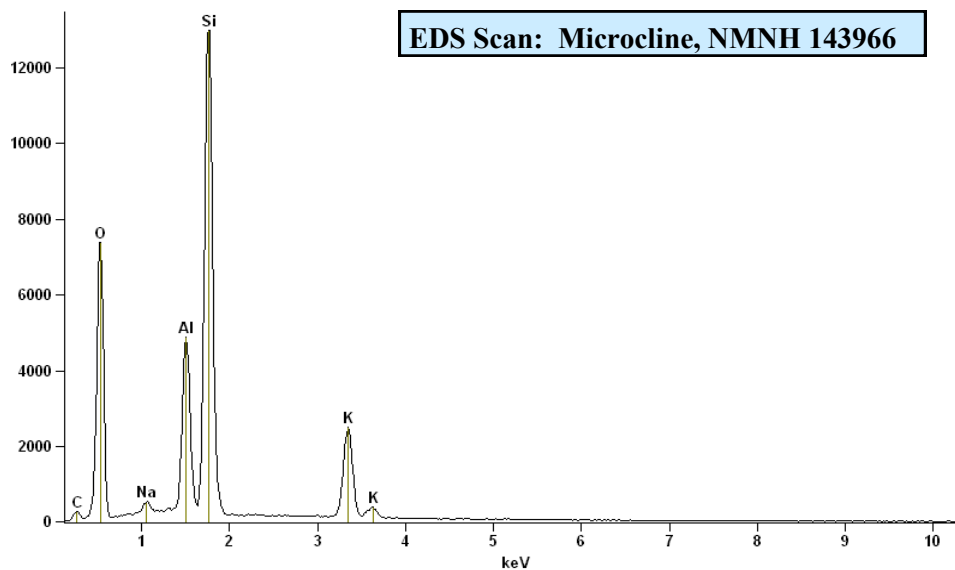
**Size fractions available:**  
 0.177 mm - 0.125 mm  
 0.125 mm - 0.066 mm

Analyst: E. Kiss (Jarosewich, *et. al.*, 1980).  
 Source: unknown locality

### Standard Specifics:

Impurities: albite: included crystals, rare

### EDS Scan: Microcline, NMNH 143966



### References:

Jarosewich, E. *et. al.* (1980) Reference Samples for Electron Microprobe Analysis. *Geostand. Newslett.* 4, p. 43-47.