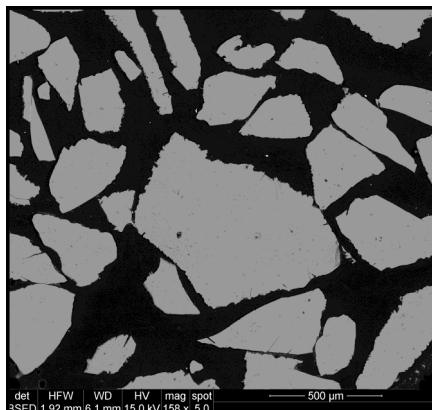


Olivine, USNM 2566

SiO ₂ :	38.95
FeO:	16.62
MgO:	43.58
MnO:	0.30
Cr ₂ O ₃ :	0.02
H ₂ O:	<0.05
TOTAL	99.47

Size fractions available:

0.42 mm - 0.25 mm
 >0.25 mm



Analyst: J. Norberg (Jarosewich,
et. al., 1980)
 Source: Springwater meteorite

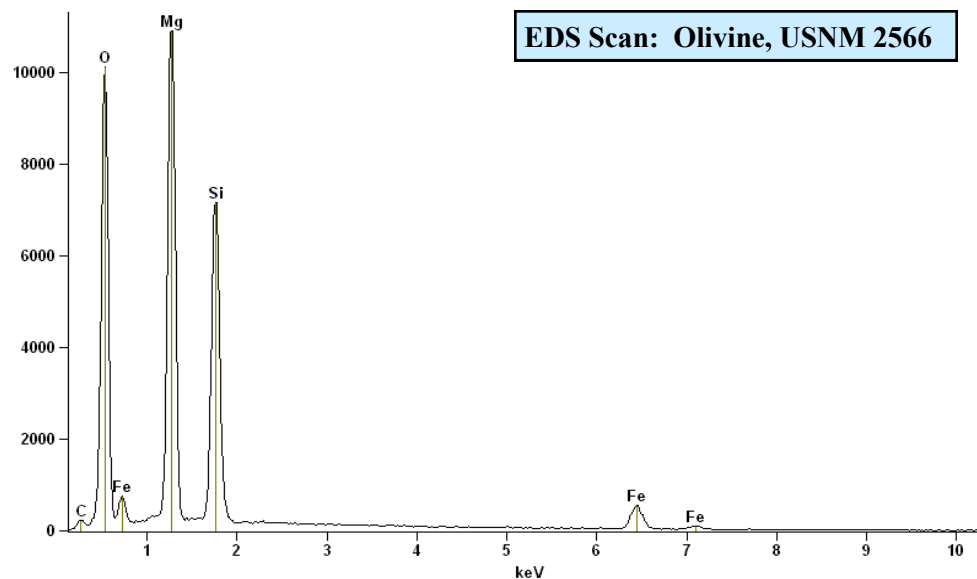
Standard Specifics:

This note was distributed by Gene Jarosewich with a number reference materials:

“Based on our experience the oxides in the standards listed below may give inferior results. Other oxides in the same standards give excellent results.

SiO₂: Springwater Olivine”

Recently a phosphorus rich portion of a grain was found in a Smithsonian mount. The phosphorus rich area has a sharp boundary with the rest of the grain and approximately 8 wt. % P₂O₅.



References:

Jarosewich, E. *et. al.* (1980) Reference Samples for Electron Microprobe Analysis. *Geostand. Newslett.* 4, p. 43-47.