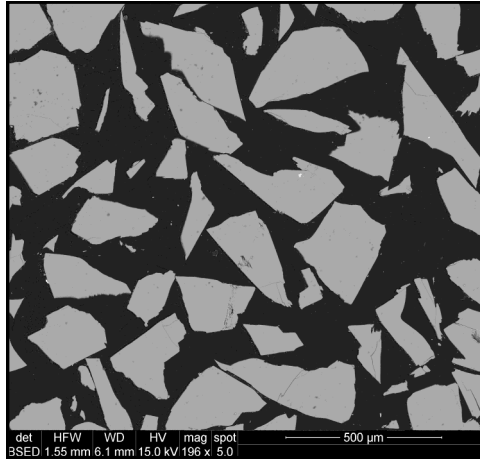




Plagioclase, NMNH 115900

SiO ₂ :	51.25
Al ₂ O ₃ :	30.91
Fe ₂ O ₃ :	0.34
FeO:	0.15
MgO:	0.14
CaO:	13.64
Na ₂ O:	3.45
K ₂ O:	0.18
TiO ₂ :	0.05
MnO:	0.01
H ₂ O:	0.05
TOTAL	100.17



Size fractions available:
> 0.149 mm

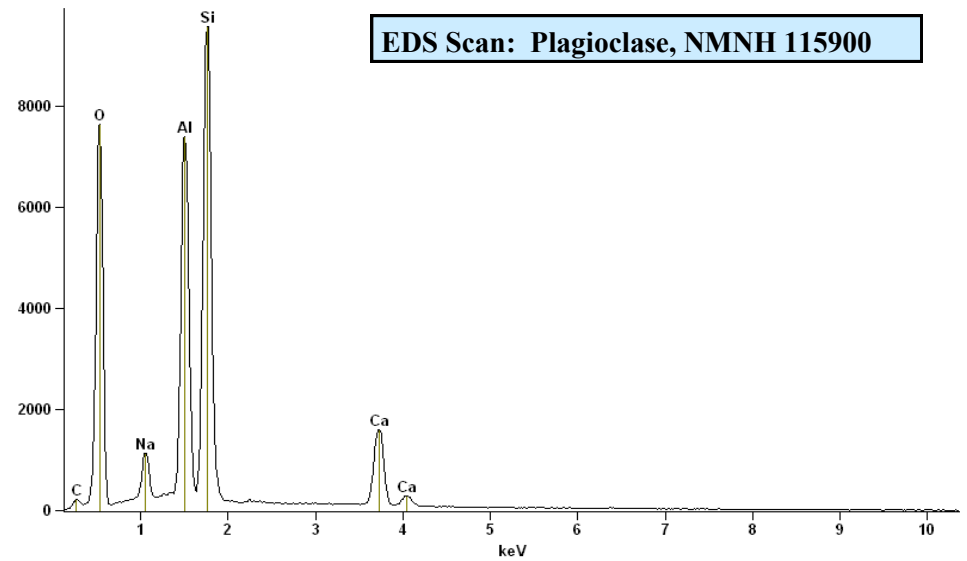
Analysts: J.J. Fahey and L.C. Peck (Stewart et al., 1966).
Source: Lake County, Oregon

Standard Specifics:

Full scale counts: 9560

EDS2[plagioclase]

EDS Scan: Plagioclase, NMNH 115900



References:

- Stewart, D.B., Walker, G.W., Wright, T.L., Fahey, J.J. (1966) Physical Properties of calcic Labradorite from Lake County, Oregon; *American Mineralogist* 51, 177-197.
- Jarosewich, E. et al. (1980) Reference Samples for Electron Microprobe Analysis. *Geostand. Newslett.* 4, p. 43-47.