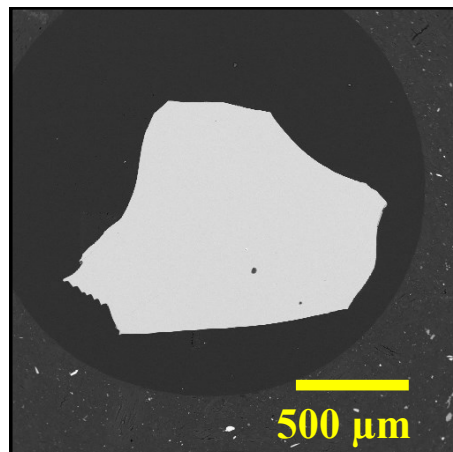


Corning Glass IR-X, NMNH 117085

B ₂ O ₃ :	*4.35	CuO:	0.005
Na ₂ O:	-	ZnO:	0.787
MgO:	8.57	Rb ₂ O:	0.494
Al ₂ O ₃ :	18.04	SrO:	0.762
SiO ₂ :	57.23	Y ₂ O ₃ :	0.851
P ₂ O ₅ :	<0.006	ZrO ₂ :	0.789
K ₂ O:	0.028	Cs ₂ O:	-
CaO:	6.34	BaO:	0.017
TiO ₂ :	0.006	La ₂ O ₃ :	0.004
V ₂ O ₃ :	0.003	Ce ₂ O ₃ :	-
Cr ₂ O ₃ :	0.001	HfO ₂ :	0.019
MnO:	0.005	PbO:	0.754
FeO:	0.063	ThO ₂ :	0.016
CoO:	0.004	UO ₂ :	0.754
NiO:	0.730		
TOTAL		*100.628	



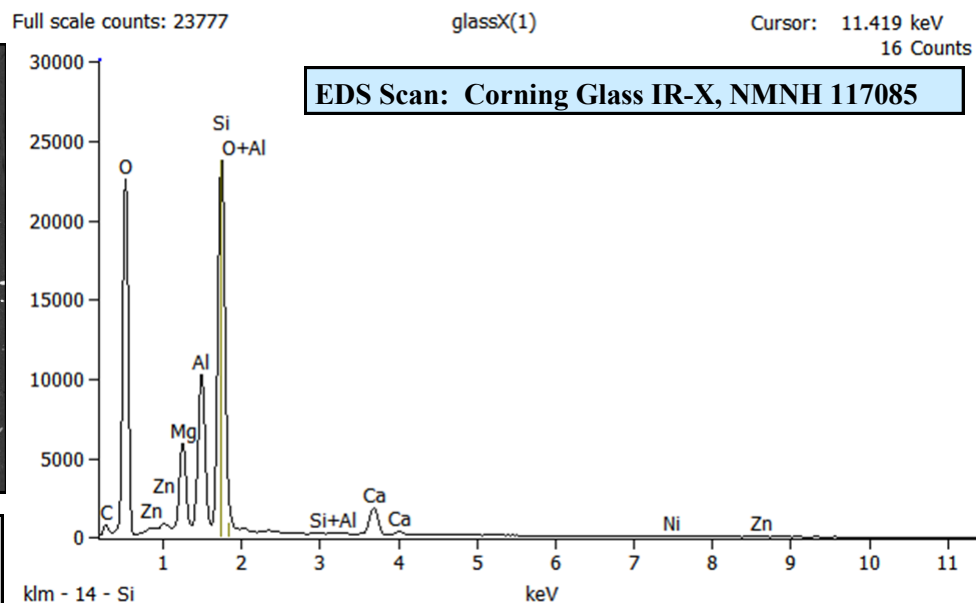
Size fractions available:
 Rods that can be chipped
 1.68 mm - 0.710 mm
 0.710 mm - 0.500 mm
 See below

Analysis: Carpenter *et. al.*, 2002. Source: synthetic

Standard Specifics:

*Published total is 100.60. B₂O₃ value of 4.35 wt. % was left out of Table 7 in reference paper (personal communication with P. Carpenter, 2013).

A large quantity of this material exists in 6.5mm diameter rods making it suitable for large area destructive analysis.



References:

Carpenter, P. *et. al.* (2002) Characterization of Corning EPMA Standard Glasses 95IRV, 95IRW, and 95IRX. *J. of Res. NIST*, 107, p. 703-718.