

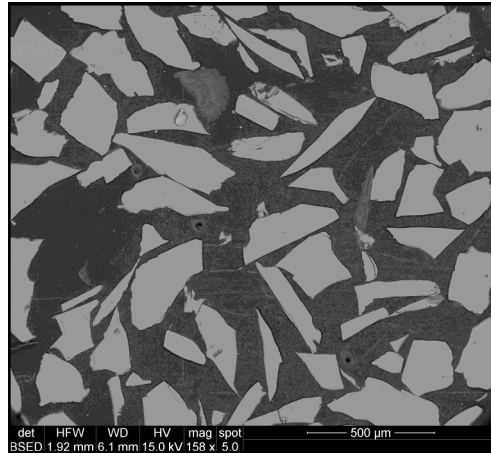


## Corundum, NMNH 135602

<b>Al<sub>2</sub>O<sub>3</sub>:</b>	<b>99.99</b>
<b>TOTAL</b>	<b>99.99</b>

### Emission spectrometric analysis:

Si = 0.03; Fe = 0.003; Mg = 0.007; Ca = 0.003; Na = 0.005 and K = 0.005

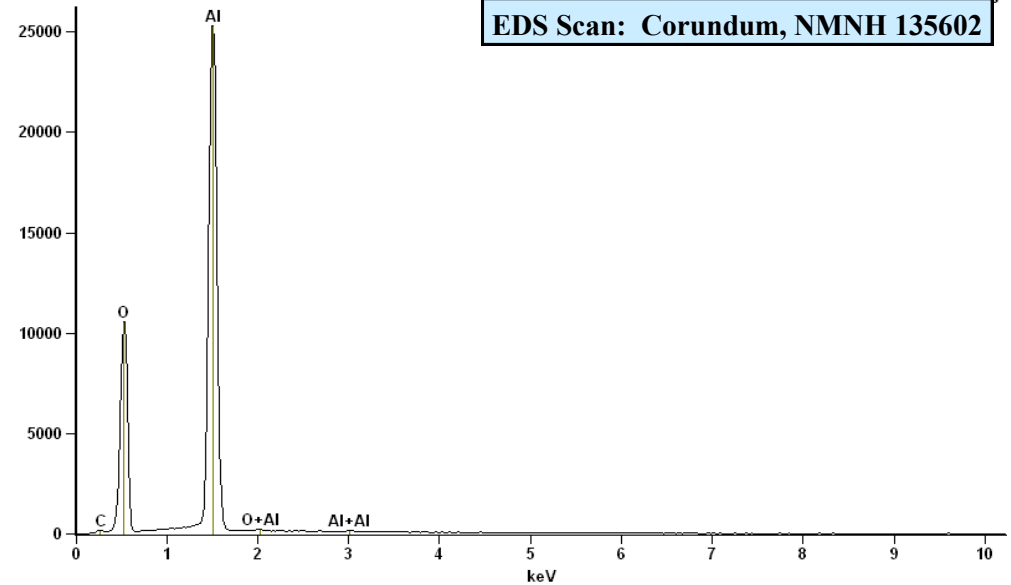
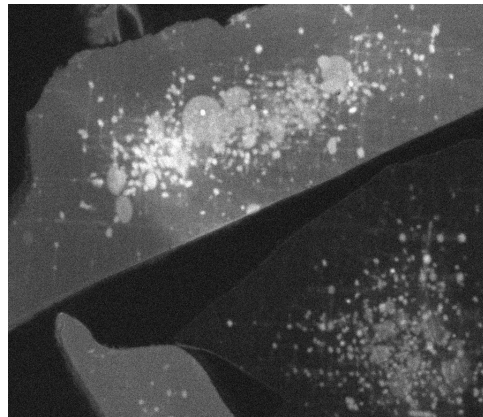


**Analyst:** E. Jarosewich  
(Jarosewich et. al., 1980).

**Size fractions available:**  
0.250 mm - ≈ 0.177mm

### Standard Specifics:

**Cathodoluminescence:** this material exhibits peaks at approximately 330, 575 and 728 nm. Samples exhibit permanent induced CL as can be seen in grains used as electron beam references (see below).



### References:

Jarosewich, E., Nelen, J. A., and Norberg, J. A. (1980) Reference Samples for Electron Microprobe Analysis. *Geostandards Newsletter* 4, p. 43-47.