

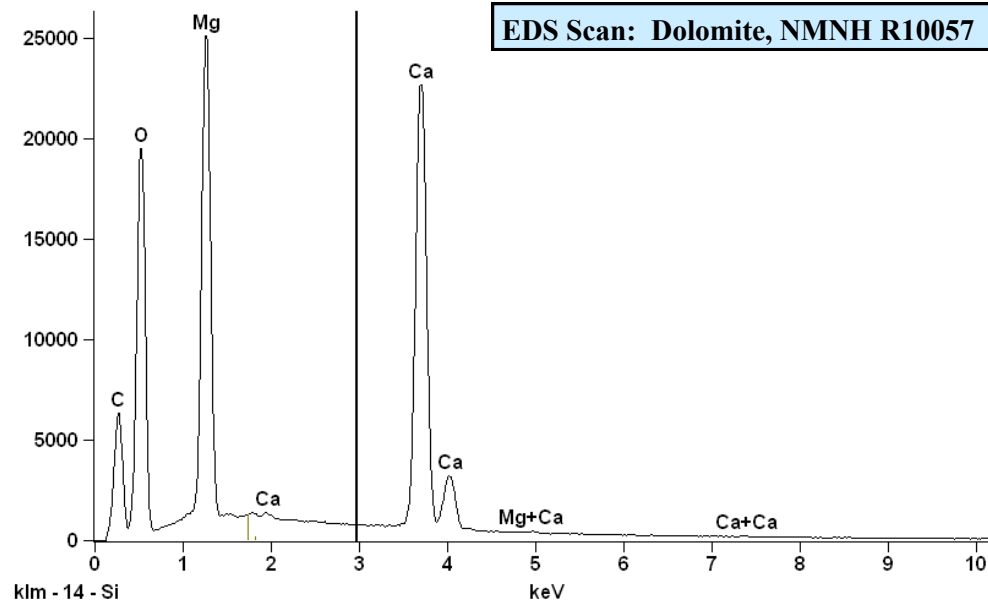
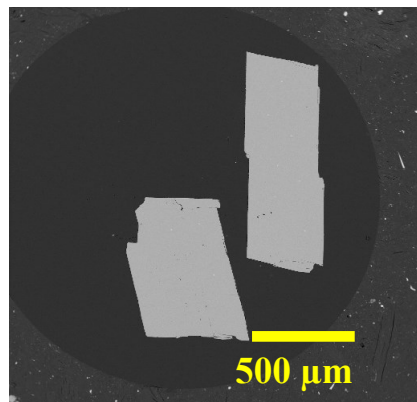


Dolomite, NMNH R10057

CaO:	30.56
MgO:	22.04
CO ₂ :	46.93
TOTAL	99.53

Size fractions available:
0.42 - 0.25 mm

Analysis: Jarosewich et. al., 1980
Source: Oberdorf, Austria



Standard Specifics:

References:

Jarosewich, E. and MacIntyre, I. G. (1983) Carbonate reference samples for electron microprobe and scanning electron microscope analyses. *J. of Sedimentary Petrol.* 52 (2), p. 677-678.