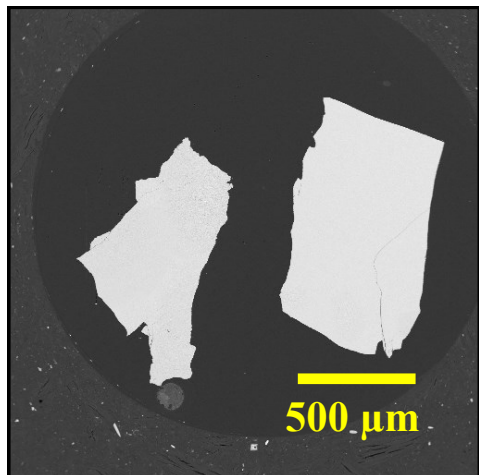




Glass, Basalt NMNH 113716-1

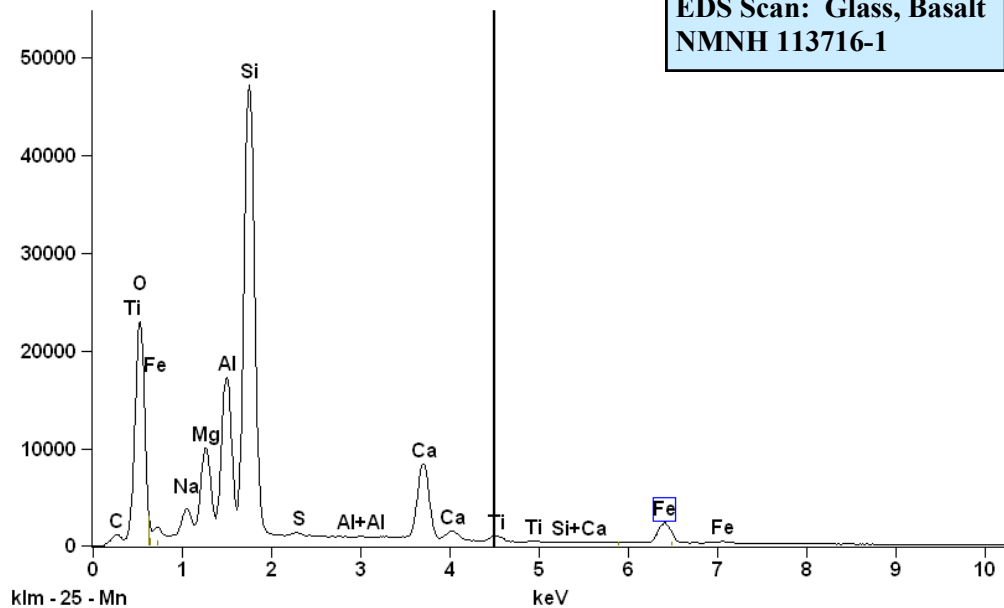
SiO ₂ :	51.52
Al ₂ O ₃ :	15.39
Fe ₂ O ₃ :	1.12
FeO:	8.12
MgO:	8.21
CaO:	11.31
Na ₂ O:	2.48
K ₂ O:	0.09
TiO ₂ :	1.30
P ₂ O ₅ :	0.12
MnO:	0.17
H ₂ O:	0.18
S:	0.12
Sub-total	100.13
O equivalent to S = 0.06	
TOTAL	100.07



Analyst: J. Norberg (Jarosewich et. al., 1980).
Source: Indian Ocean

Size fractions available:
1.0 mm - 0.5 mm

EDS Scan: Glass, Basalt NMNH 113716-1



References:

Jarosewich, E., Nelen, J. A., and Norberg, J. A. (1980) Corrections. *Geo-standards Newsletter* 4, p. 257-258.

Jarosewich, E., Nelen, J. A., and Norberg, J. A. (1980) Reference Samples for Electron Microprobe Analysis. *Geostandards Newsletter* 4, p. 43-47.

Standard Specifics: