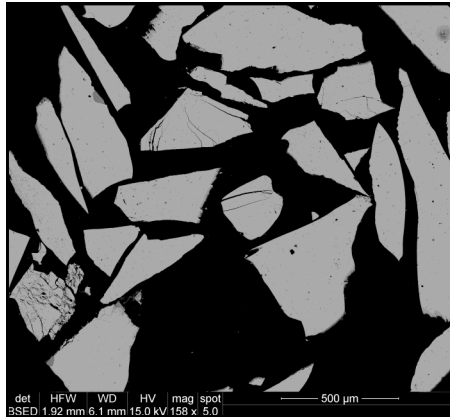




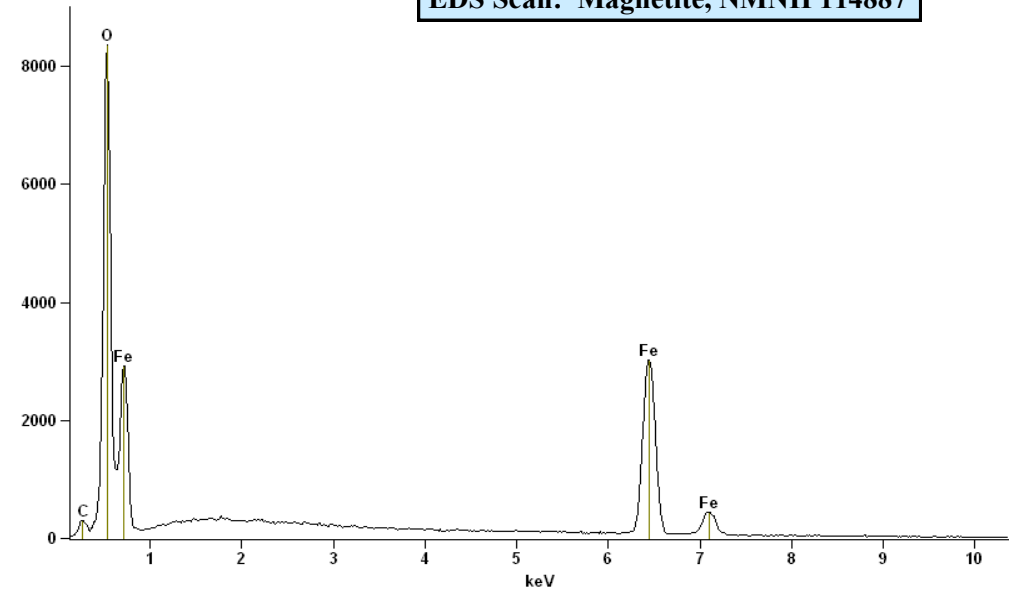
Magnetite, NMNH 114887

Fe ₂ O ₃ :	67.50
FeO:	30.20
MgO:	0.05
TiO ₂ :	0.16
MnO:	<0.01
Cr ₂ O ₃ :	0.25
TOTAL	98.16



Full scale counts: 8349

EDS Scan: Magnetite, NMNH 114887



Size fractions available:

1.0 mm - 0.5 mm
0.5 mm - 0.25 mm
0.25 mm - 0.177 mm
< 0.177 mm

Analysis: J. Norberg
(Jarosewich, *et. al.*, 1980).

Source: Minas Gerais, Brazil

References:

Jarosewich, E., Nelen, J. A., and Norberg, J. A. (1980) Corrections. *Geostandards Newsletter* 4, p. 257-258.

Jarosewich, E. *et. al.* (1980) Reference Samples for Electron Microprobe Analysis. *Geostand. Newslett.* 4, p. 43-47.

Standard Specifics:

Impurities: ilmenite; rare