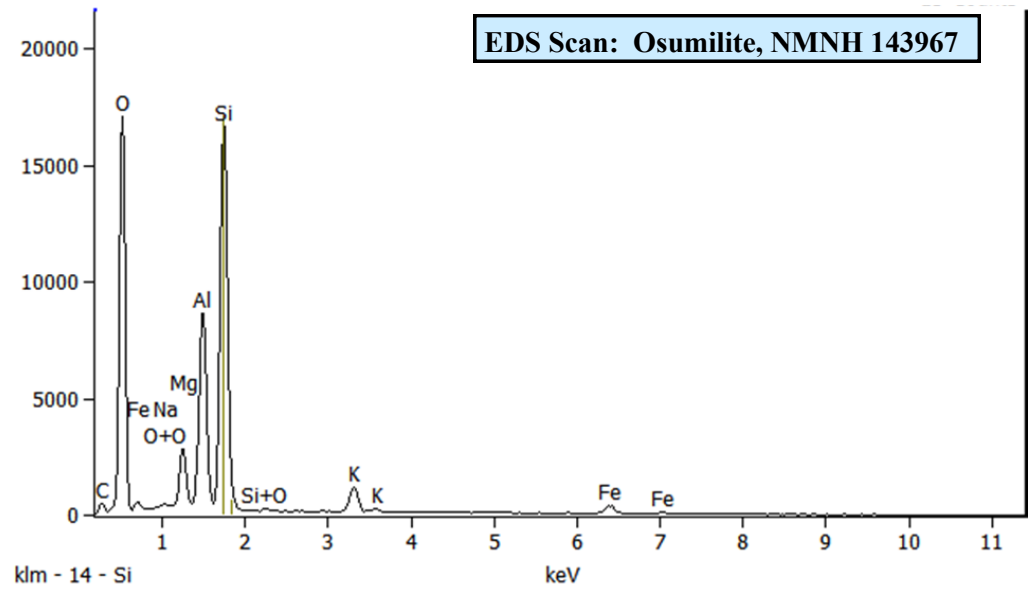
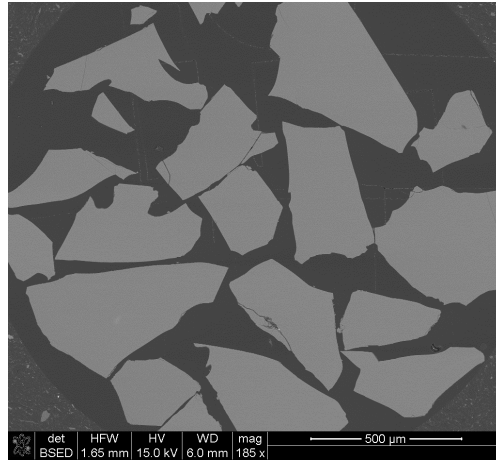




Osumilite, NMNH 143967

SiO ₂ :	60.20
Al ₂ O ₃ :	22.60
FeO:	6.38
MgO:	5.83
CaO:	<0.03
Na ₂ O:	0.39
K ₂ O:	4.00
TiO ₂ :	0.18
H ₂ O:	0.02
TOTAL	99.60



Analysis: Jarosewich, *et. al.*, 1980
Source: Nain, Labrador, Canada

Size fractions available:
fragments of unknown size

Standard Specifics:

References:

Jarosewich, E. *et. al.* (1980) Reference Samples for Electron Microprobe Analysis. *Geostand. Newslett.* 4, p. 43-47.