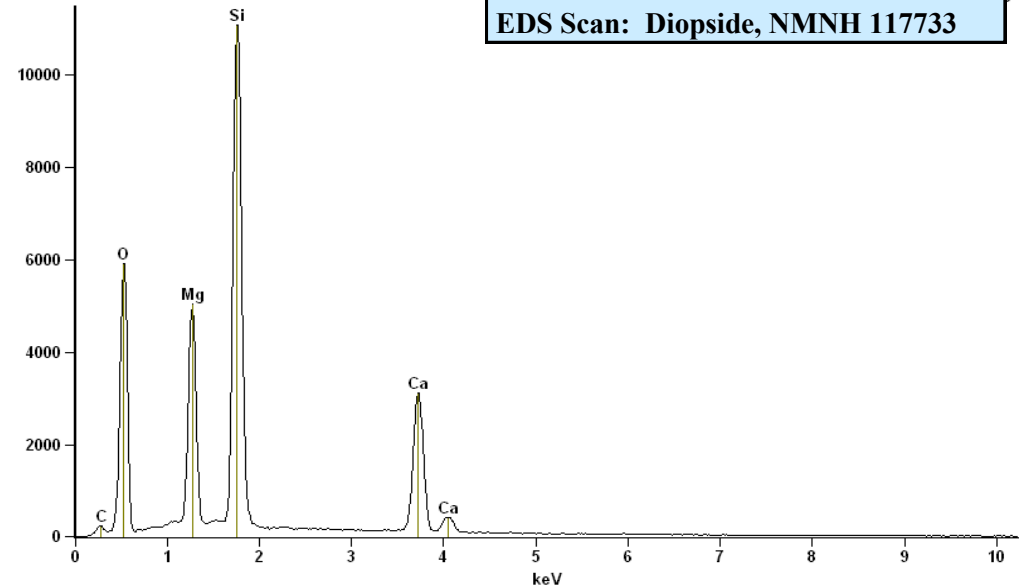
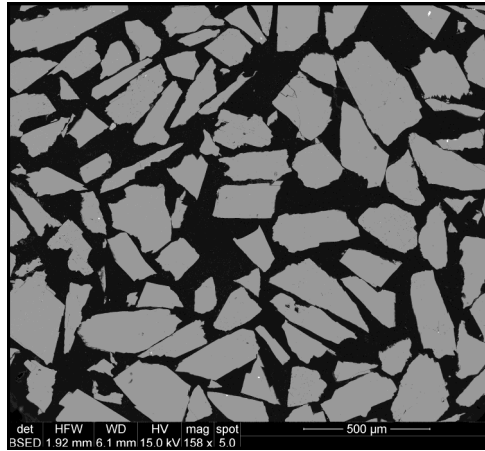




## Diopside, NMNH 117733

		*
		preferred values
SiO <sub>2</sub> :	54.87	55.81
Al <sub>2</sub> O <sub>3</sub> :	0.11	0.11
FeO:	0.24	0.25
MgO:	18.30	17.79
CaO:	25.63	25.28
Na <sub>2</sub> O:	0.34	0.25
MnO:	0.04	0.04
<b>TOTAL</b>	<b>99.53</b>	<b>99.53</b>



- **Preferred values:** Reanalyzed by E. Jarosewich. Personal communication from Glenn MacPherson.

**Analyst:** J. Nelen (Jarosewich et al., 1980).  
**Source:** Natural Bridge, New York

**Size fractions available:**  
> 1.0 mm; 1.0 mm - 0.42 mm

### Standard Specifics:

**Impurities:** apatite - rare; pyrite - rare

### References:

Jarosewich, E., Nelen, J. A., and Norberg, J. A. (1980) Reference Samples for Electron Microprobe Analysis. *Geostandards Newsletter* 4, p. 43-47.