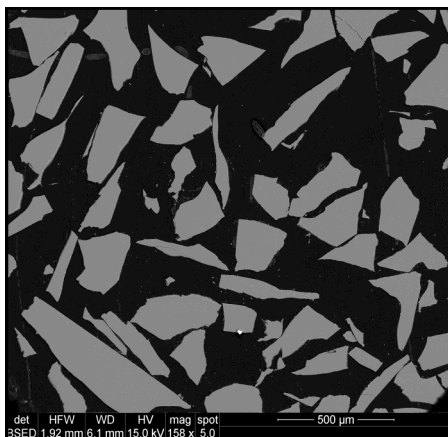




Scapolite (*Meionite*), NMNH R6600

SiO ₂ :	49.78
Al ₂ O ₃ :	25.05
FeO:	0.17
CaO:	13.58
Na ₂ O:	5.20
K ₂ O:	0.94
H ₂ O:	0.21
CO ₂ :	2.50
SO ₃ :	1.32
Cl:	1.43
Sub-total	100.18
<hr/>	
O equivalent to Cl = 0.32	
TOTAL	99.86



Size fractions available:
0.25 mm - 0.177 mm
> 0.177 mm

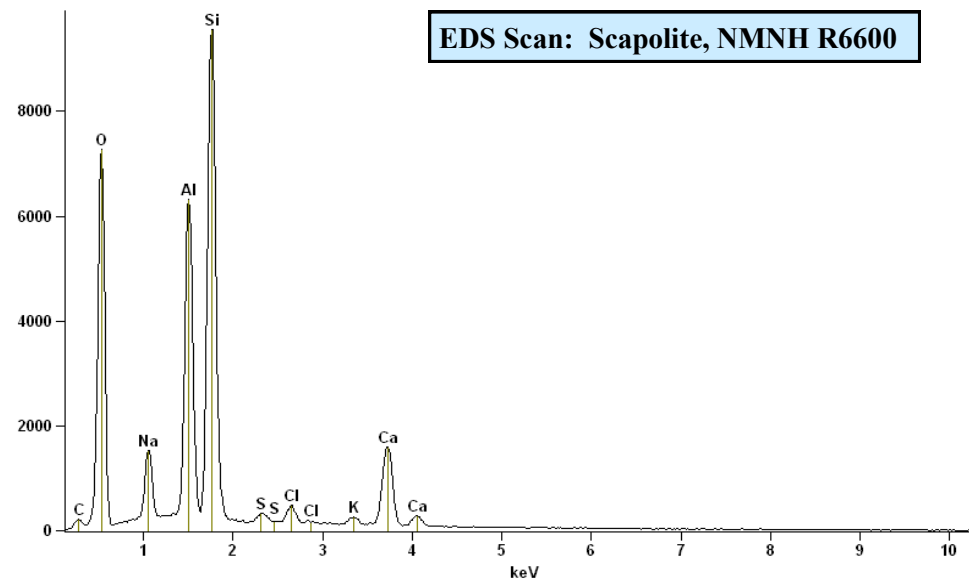
Analysis: J. Nelen (Jarosewich, *et al.*, 1980).
Source: Brazil

Standard Specifics:

Full scale counts: 9543

EDS2[scapolite]

EDS Scan: Scapolite, NMNH R6600



References:

Jarosewich, E., Nelen, J. A., and Norberg, J. A. (1980) Corrections. *Geo-standards Newsletter* 4, p. 257-258.

Jarosewich, E. *et al.* (1980) Reference Samples for Electron Microprobe Analysis. *Geostand. Newslett.* 4, p. 43-47.