



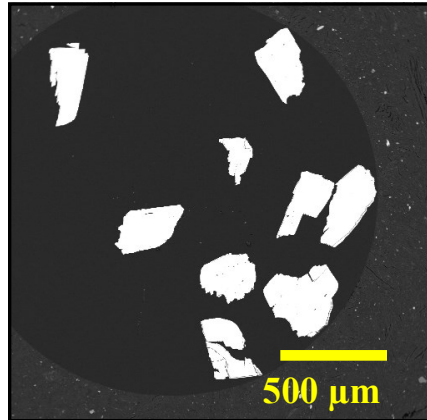
Smithsonian  
National Museum of Natural History

## Siderite, NMNH R2460

FeO:	59.08
MnO:	2.95
CO <sub>2</sub> :	37.88
<b>TOTAL</b>	<b>99.91</b>

Size fractions available:  
0.42 - 0.25 mm

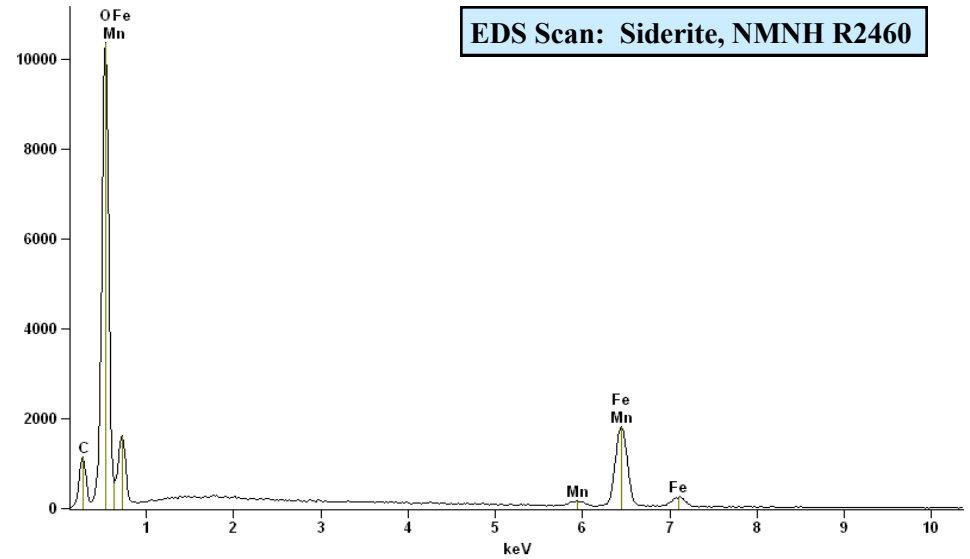
Analysis: Jarosewich, *et. al.*, 1983  
Source: Ivigtut, Greenland



Full scale counts: 10371

EDS2[siderite]

EDS Scan: Siderite, NMNH R2460



### Standard Specifics:

### References:

Jarosewich, E. *et. al.* (1983) Carbonate reference samples for electron microprobe and scanning electron microscope analyses. *J. of Sedimentary Petrol.* 52 (2), p. 677-678.