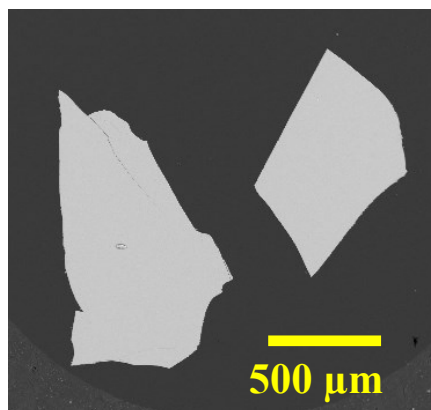


Tektite, Glass (*synthetic*) NMNH 2231

SiO ₂ :	75.75
Al ₂ O ₃ :	11.34
Fe ₂ O ₃ :	0.64
FeO:	4.32
MgO:	1.51
CaO:	2.66
Na ₂ O:	1.06
K ₂ O:	1.88
TiO ₂ :	0.50
P ₂ O ₅ :	0.00
MnO:	0.11
H ₂ O:	0.10
Cl:	0.00
F:	0.01
Total	99.88

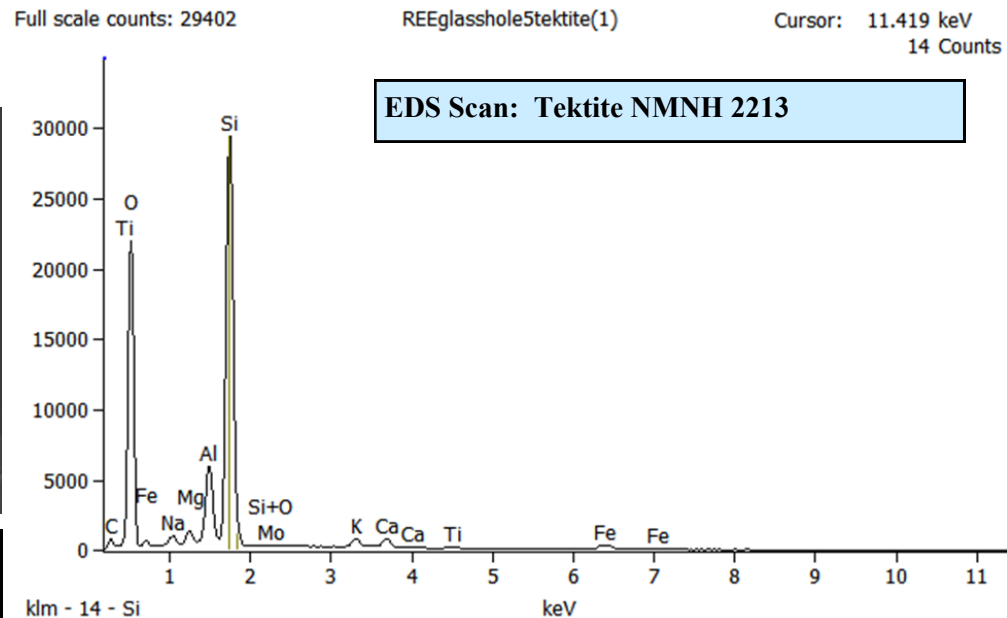


Analyst: USGS Geochemistry and Petrology Branch (Jarosewich, *et. al.*, 1980).
 Source: Corning synthetic

Size fractions available:

1.00 - 0.5 mm
 0.50 - 0.25 mm

Standard Specifics:



References:

- Jarosewich, E. *et. al.* (1980) Reference Samples for Electron Microprobe Analysis. *Geostand. Newslett.* 4, p. 43-47.
- Jarosewich, E., Nelen, J. A., and Norberg, J. A. (1980) Corrections. *Geo-standards Newsletter* 4, p. 257-258.